



9 Albert Embankment, London
SE1

GARTONJONES.COM



9 Albert Embankment, London , SE1

£750 Per Week

A direct river facing, 2 double bedroom apartment of 1,139sq.ft (105sq.m) available to rent in 9 Albert Embankment, a highly sought-after development on the banks of the River Thames. This spacious property further benefits from an open plan reception room with fully integrated modern kitchen, floor to ceiling windows with access to a large private balcony enjoying lovely views of the River Thames towards the Houses of Parliament and beyond.

9 Albert Embankment has a 24-hour concierge and on-site convenience store and is located just to the Southside of Lambeth Bridge within walking distance to Parliament Square, London's trendy South Bank and the West End. Transport links are excellent with frequent bus service on the doorstep and the rail/tube links of both Vauxhall and Waterloo within easy reach.

Please note furniture may differ to that shown in the current photos.

- Electricity Supply — Mains | Water Supply — Mains | Sewerage — Mains | Heating — Electric Radiators
- Broadband & Mobile Signal : Check Coverage via Ofcom
- No Parking
- Lift Access
- Building Safety: EWS1 Available on Request
- Council Tax Band G (London Borough of Lambeth)
- 5 Week Security Deposit
- Holding deposit equivalent to 1 week of rent
- Rent to be payable monthly in advance
- EPC Rating C (73)

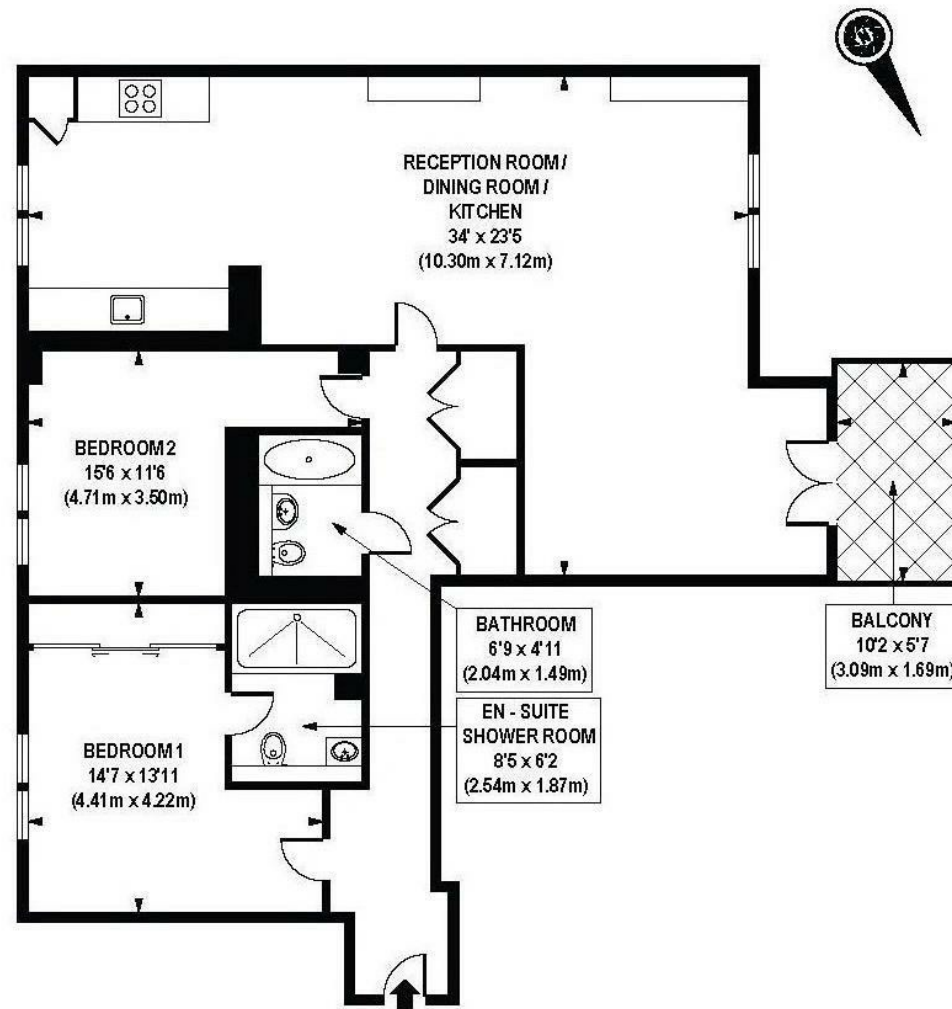
- 2 Bedrooms
- 1,139sq.ft (105sq.m)
- Direct River Views
- 2 Bathrooms (1 En-Suite)
- Open Plan Reception
- Modern Integrated Kitchen
- Large Balcony
- 24 Hour Concierge
- On-Site Convenience Store
- 0.5 Miles from Vauxhall Station

GARTON JONES.COM

9 Albert
Embankment
London
SE1 7SP

Lettings:
+44 (0) 20 7735 1888
nineelms@gartonjones.com
www.gartonjones.com





APPROXIMATE GROSS INTERNAL AREA 1139 sq. ft / 105.86 sq. m

